

## Animal Mazes for Video-Tracking

### FOR STUDIES OF:

- Anxiety and Stress
- Memory and Learning
- Spatial Memory
- Activity and Exploration



錫昌科技股份有限公司  
**KYS Technology**

T 02-2911-5233

F 02-2911-6855

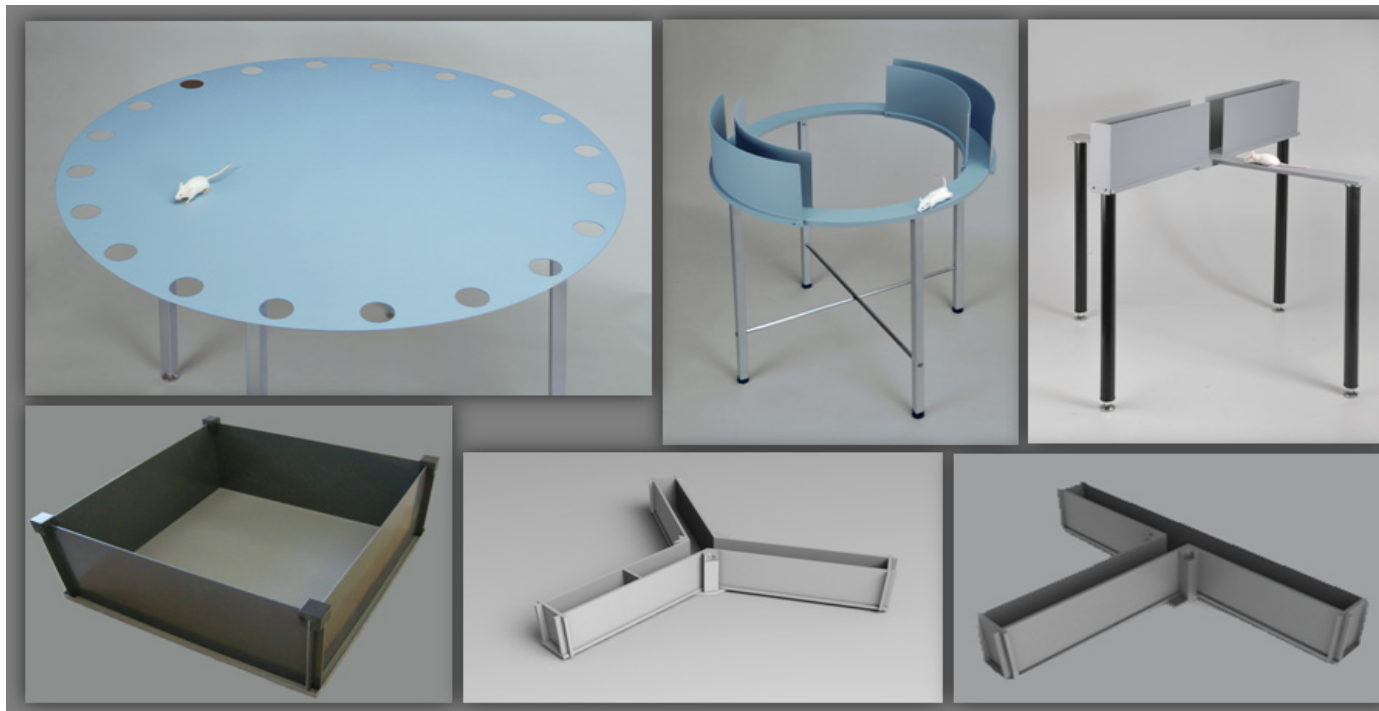
E info@kyst.com.tw

### General

The Animal Mazes manufactured by Ugo Basile are designed to give optimal results with any Video-Tracking software. This is achieved by:

- *high-contrast colors*: grey, white, black or the NEW Ugo Basile Light-Blue
- *non-reflective colors*: reflections are a common source of error in animal tracking. Let's avoid them!

All maze materials were selected to be *sturdy and easy to clean*, to construct reliable and durable mazes.



### Main Features

- High-contrast, non-reflective colors optimized for Video-Tracking
- Quality materials: light, easy to clean and to store
- Surface texture selected for best rodent's comfort (reasonable rough, "warm" surface)

## Water Maze Pool

The Ugo Basile Water Mazes are water pools specifically manufactured for Morris Water Maze experiments (i.e., not a cattle drinking trough) and include:

- wheels and drain hose
  - built-in connectors for Hydraulic Atlantis Platforms (not included)
  - customizable colors and dimension on request
  - animal platform (fixed height, 10 or 12 cm diameter)
- Pools are 60 cm high and 120, 150 or 180 cm diameter.



## Barnes Maze

- Mouse version: 100 cm diameter, 5 cm hole diameter
- Rat version: 130 cm diameter, 10 cm hole diameter



Both versions are 60 cm high and are painted in non-reflective grey or light-blue (white, black or other custom colors are available on request). The animal shelter is included and is magnetically attached to the maze, for quick and easy experiments.

## Elevated Plus-Maze and Zero-Maze



Elevated Plus-Maze



Zero - Maze

These mazes are manufactured from high-tech metal alloy and can be painted in different colors. Dimension (cm):

- Elevated Plus-Maze, Mouse: arm length 35, arm width 5, closed wall height 15, height from the floor 60
- Elevated Plus-Maze, Rat: arm length 50, arm width 10, closed wall height 40, height from the floor 60
- Zero-Maze, Mouse: diameter 55, corridor width 5, wall

height 15, height from the floor 60 cm

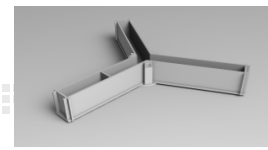
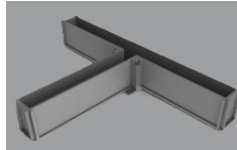
## Y-maze, T-maze

These mazes have a metal base painted in non-reflective grey (more colors on request) and plastic arms that can be disassembled and closed with the included doors. Dimension (cm):

Y-maze, Mouse: arms length 35, width 5, wall height 10  
Y-maze, Rat: arms length 50, width 10, wall height 20

T-maze, Mouse: stem length 35, arm length 30, width 5, wall height 10

T-maze, Rat: stem length 50, arm length 40, width 10, wall height 20



## Open-Field

Open Fields are available in non-reflective grey color, for mice (44 cm) or for rats (100 cm); both versions have detachable walls for ease of storage.

## NEW Mouse Radial Maze

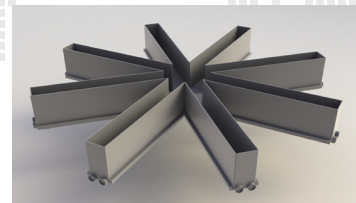
The new Mouse Radial Maze is manufactured from high-tech metal alloy and durable plastics to be as sturdy as possible.

A new automated model, with retractable doors is also available.

Different colors are available, all non-reflective, and arms can be detached, for easy cleaning.

Dimension (cm):

arms length 35, width 5, wall height 10



## Ordering Information

- 40125 Water Maze, 120 cm, for mice
- 40155 Water Maze, 150 cm, for mice and rats
- 40185 Water Maze, 180 cm, for rats
- 40193 Barnes Maze, for mice
- 40192 Barnes Maze, for rats
- 40142 Elevated Plus-Maze, for rats
- 40143 Elevated Plus-Maze, for mice
- 40163 Elevated Zero-Maze, for mice
- 40173 Y-maze, for mice
- 40172 Y-maze, for rats
- 40133 T-maze, for mice
- 40132 T-maze, for rats
- 47432 Open-field, 44 cm, dark walls
- 47433 Open-field, 44 cm, transparent walls
- 47100 Open-field, 100 cm, dark walls
- 47150 Open-field, 100 cm, with 4 partitions